



Forest Carbon Partnership Facility

Fiji R-PACKAGE

PC 27 Meeting, Washington DC,
Anis Wan, Task Team Leader, World Bank
March 19, 2019

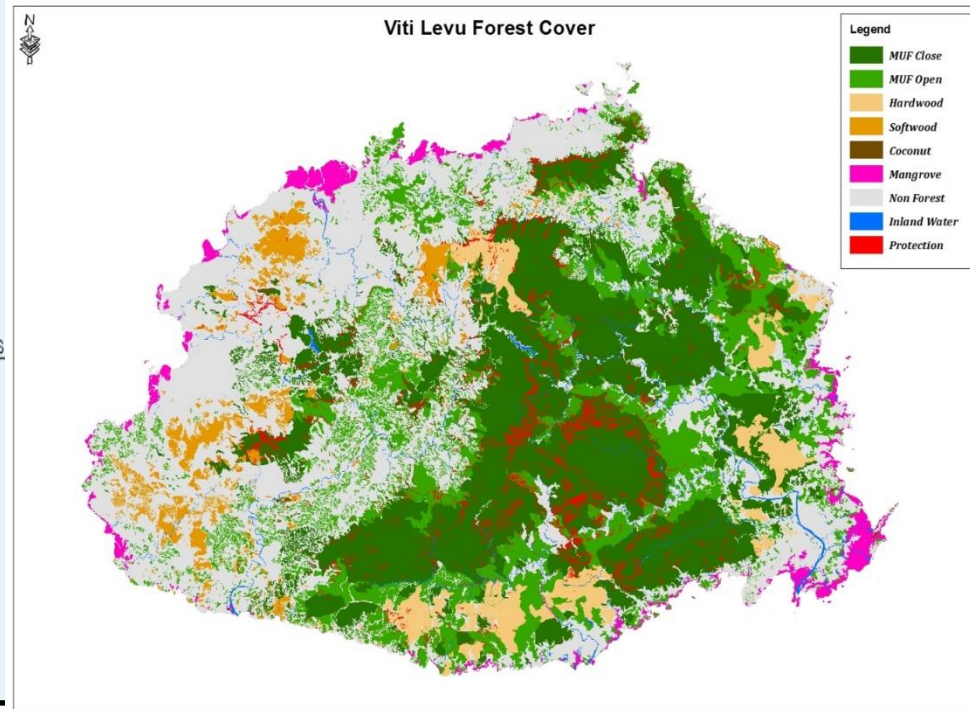
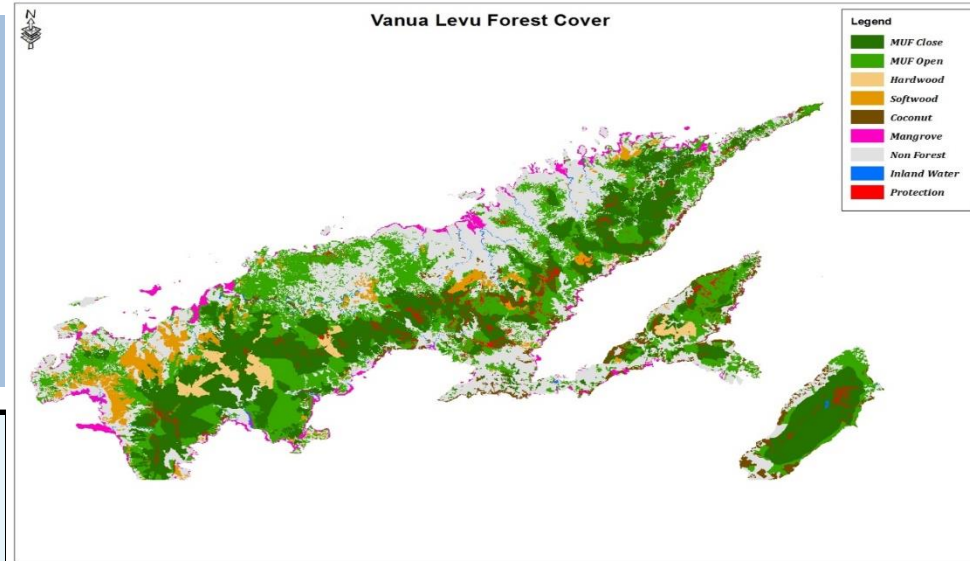
CONTENT

- Country Context
- Complementarities with SCD, and PDO
- Overall progress by component
- Financial summary including disbursements
- Challenges
- Opportunities and next steps

Country Context

- Population 870,000
- 332 islands
- Forest cover 55%
- Over 13,000 communities depend directly on forest resources
- Ethnic composition - 57% Itaukei, 37% Indian Fijians, and 5.7% other ethnic groups
- Prone to natural disasters, average annual losses of about 2 percent of GDP

Geographic and Forest Contexts



Complementarities with SCD, and PDO

Aligns with WB Systematic Country Diagnostic (SCD, FY 2017) and Country Engagement Note for FY 2015-2017. The SCD identifies three pathways: (i) Stronger growth; (ii) Better access to services by all; (iii) Building resilience, which are closely linked to sustainable natural resource management and capacity building that are supported by the Readiness Project.

The Fiji Country Partnership Framework is underway to cover the priority areas for partnership cooperation from FY 2019 - 2023.

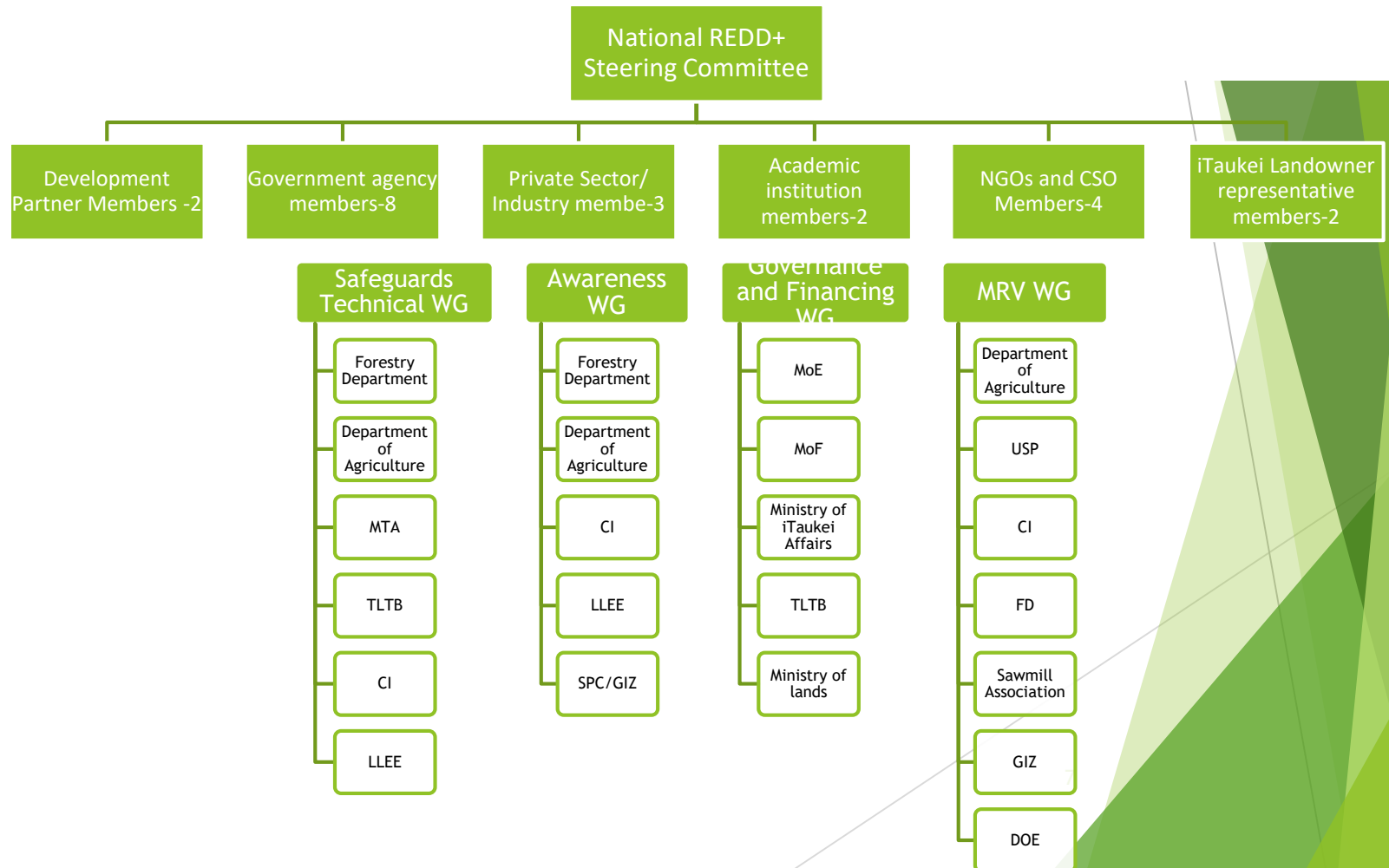
PDO: The development objective of Grant is to assist Fiji to carry out the Readiness Preparation Activities by supporting the preparation of its REDD+ strategy through a participatory and inclusive process, the establishment of a national MRV system, and by producing technical work and policy advice to help strengthen sustainable land and forest management practices.

Progress by Component

| Components | Sub Components | Progress Status |
|--|---|-----------------|
| 1. Organization and Consultation | 1a. National Readiness Management Arrangement | Green |
| | 1b. Stakeholder Consultation and Participation | Green |
| 2. Prepare the REDD Strategy | 2a. Assessment of Land Use, Forest Policy and Governance | Yellow |
| | 2b. REDD Strategy Options | Green |
| | 2c. REDD Implementation Framework | Yellow |
| | 2d. Social and Environmental Impacts | Green |
| 3. Reference emission level/reference level | | Green |
| 4. Forest monitoring systems and safeguard measures | 4a. National forest monitoring system | Green |
| | 4b. System of information on the multiple advantages, governance and safeguards | Yellow |

Component 1: Readiness Organization and Consultation

Sub-component 1A: Stakeholder Consultation and Participation



Component 1: Readiness Organization and Consultation

Sub-component 1A: National REDD Management Arrangements

- ▶ Multi-sectoral Steering Committee including key stakeholders, government, CSO, academic institutions, landowner representatives, development partners, private sector,
- ▶ REDD+ Unit established in Ministry of Forests
- ▶ Technical Working Groups for safeguards, awareness, MRV, governance and financing
- ▶ Divisional Working Groups established at northern and western divisions
- ▶ Feedback and Grievance Redress Mechanism study completed with clear recommendation for a design for FGRM

Remaining work:

- ▶ Strengthening cross sectoral cooperation;
- ▶ Capacity building at all levels, especially divisional level

Component 1: Readiness Organization and Consultation

Sub-component 1B: Consultation, Participation and Outreach

Key achievements:

- ▶ Institutional set up to ensure participation of key stakeholders
- ▶ Consultation and Participation Plan used for inclusive and transparent consultation process
- ▶ CSO platform chaired by women's group engaging in REDD+ through awareness and capacity building, stakeholder engagement and empowerment
- ▶ Communication and Awareness Working Group provides guidance on communications
- ▶ Central database in development to document consultation outcomes, biophysical information on carbon emission reduction and safeguards

Remaining work:

- ▶ Further efforts are needed to integrate the outcomes of consultation into strategy, technical activities and information systems
- ▶ Public disclosure of analytical work

Component 2: REDD+ Strategy Preparation

Key achievements:

- Drivers of Deforestation, Forest Degradation and underlying causes
- Assessment of Land use and land use change
- Legal and Policy Analysis, Forest Law, Policy and Governance
- Identification of REDD+ Strategy Options
- Cost-Benefit Analysis of Options
- Draft Strategic Environmental and Social Assessment (SESA)
- Fiji REDD Policy (2011), Fiji National Forest Carbon Stock Assessment (2011) , Development of technical parameters for the integration of Sustainable Forest Management (2011), REDD+ and Forest Carbon Rights (2013)

Remaining work:

- Finalization of SESA and ESMF
- Benefit Sharing Mechanism
- REDD Strategy
- Carbon Right Study
- REDD+ registry operational by 2020

Component 3: Forest Reference Emission Level (FRL)

Key achievements:

- ▶ FRL covering three major islands: Viti Levu, Vanua Levu and Taveuni , 90% of Fiji's landmass and about 94% of Fiji's forest area
- ▶ Reference period for forest reference level: 2006-2016.
- ▶ The activities covered under FRL include deforestation, forest degradation and enhancement of forest carbon stock
- ▶ The design of the FRL consistent with IPCC guidelines and guidance
- ▶ A stepwise approach adopted to improve the FRL by incorporating improved data, methodologies and additional pools

Remaining work:

- ▶ Include additional pools to the existing two
- ▶ Improve methods for estimating forest degradation
- ▶ Extend the sub-national FRL to national FRL
- ▶ Fully functioning database management system

Component 4:

Forest Monitoring Systems and Safeguard Measures

Key achievements:

- Use combination of remote sensing and ground based forest carbon inventory approaches
- NFMS consistent with national and international guidance
- Improved capacity for Remote Sensing and GIS analysis
- Separate organization responsible for forest inventory and assessment
- Hardware and software systems in support of NFMS established
- Capacity development plan to operationalise the NFMS
- A database system established to share the safeguard information

Remaining work:

- ▶ Operationalize REDD+ national forest monitoring system
- ▶ Continue training on RS/GIS analysis
- ▶ Institutionalize roles for implementation of NFMS
- ▶ Enhance technical capacity of staff in conducting MRV ¹²
- ▶ Safeguard Information System (SIS) to be institutionalized

Financing and Disbursement

Readiness Financing: USD 3.8 M

Cumulative disbursement: USD 2.35 M out of USD 3.8 M (62%)

Committed amount: USD 3 M out of USD 3.6 M (78%)

Additional financing: USD 2 M to be disbursed

Reason for delay: Lengthy domestic procurement process, personnel change, entered the ERP relatively late, ERP preparation.

Challenges

- ▶ Strengthen institutional capacity and coordination mechanisms among sectors, ministries, land owners, private sector, and CSOs
- ▶ Strengthen awareness activities to improve participation and engagement of REDD+ relevant stakeholders
- ▶ Share analytical results at the divisional level (eg, drivers of deforestation and corresponding strategic options, etc.)
- ▶ Improve Forest Reference Level (FRL) through adoption of a stepwise approach will improve estimation of the FRL
- ▶ Operationalize National Forest Monitoring System (NFMS)



Opportunities and Next Steps

- REDD+ Strategy informs national strategies
- Potential emission reductions: 3 million t CO₂ in ER Program;
- Co-benefits - livelihood, productivity, food security, agricultural intensification, and resilience.
- Institutionalize safeguard information system
- Develop benefit sharing mechanism
- Strengthen National Forest Monitoring System for integrated carbon and co-benefits monitoring.
- Strengthen capacity and consultations at national and sub-national levels

